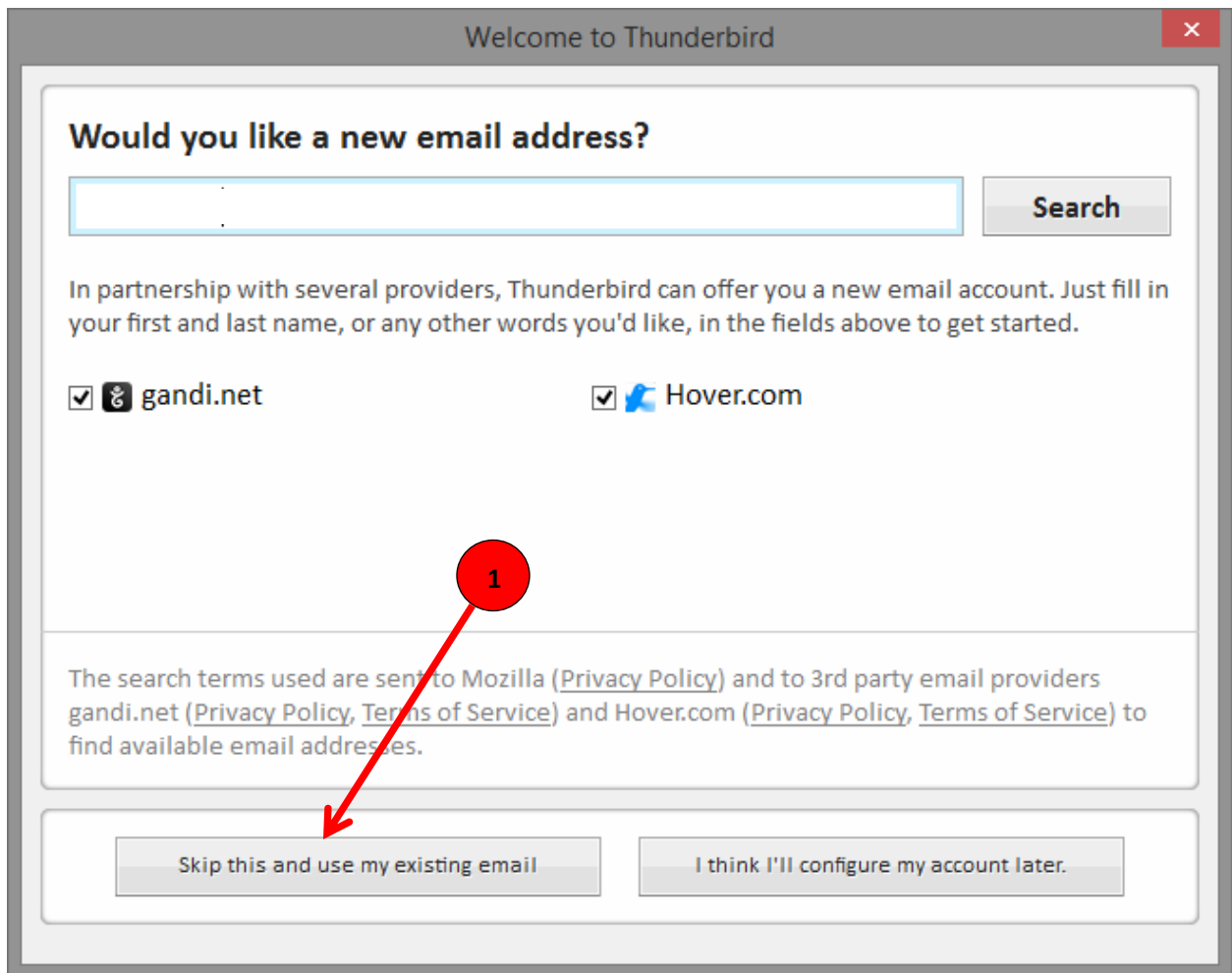
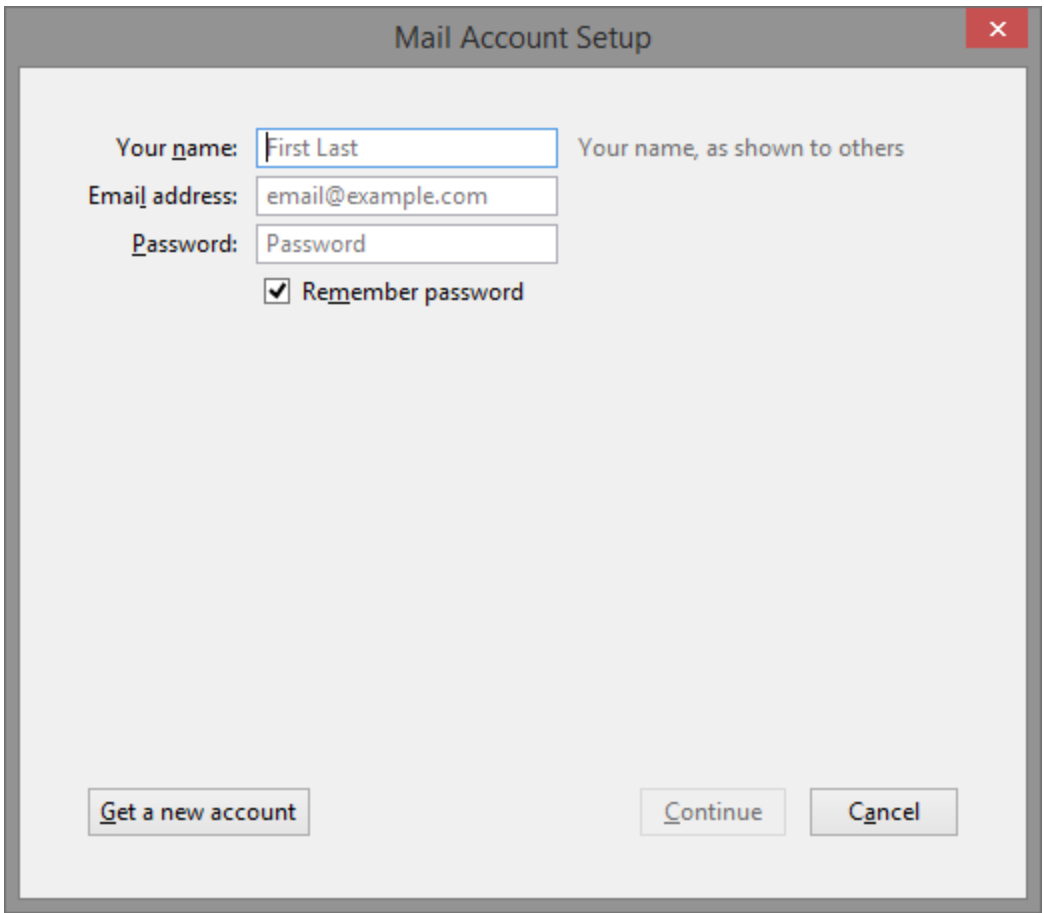


## RVUSA E-Mail Setup – Mozilla Thunderbird (First Time Use)

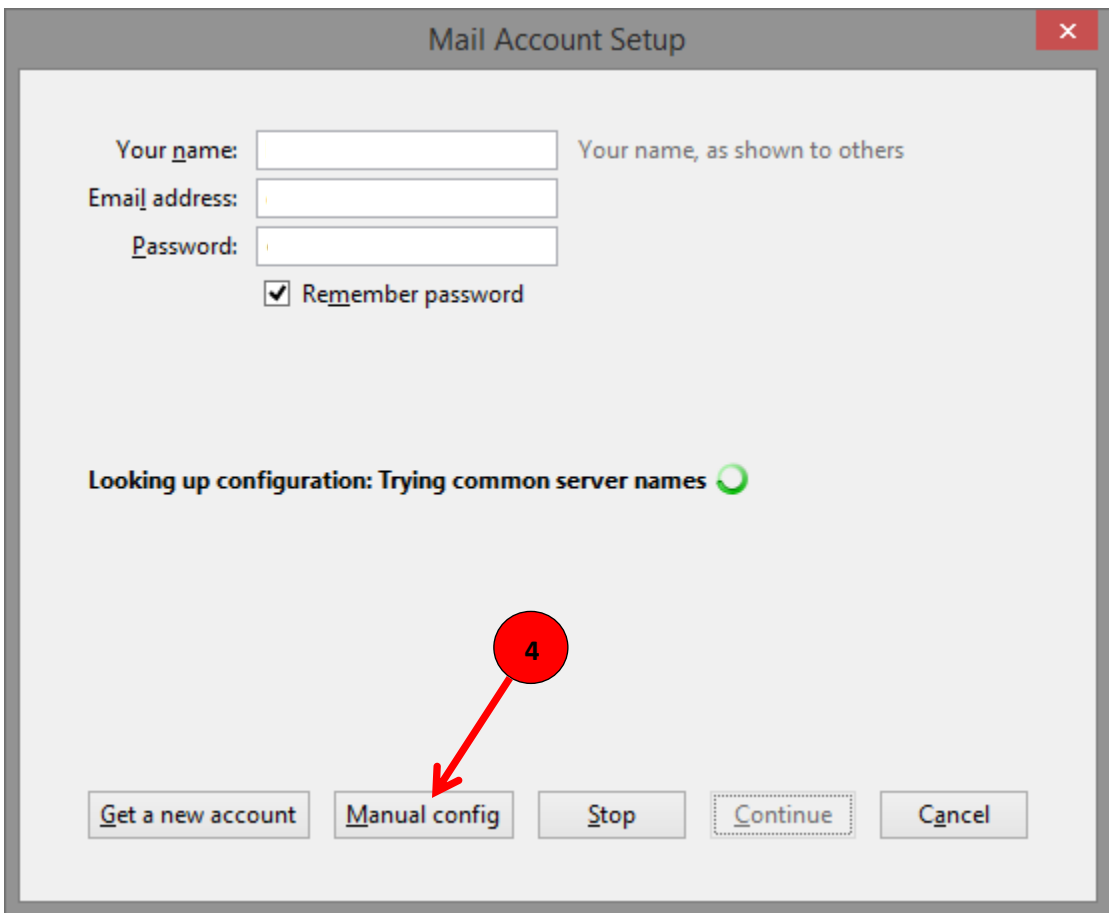
1. Launch Mozilla Thunderbird and click on **Skip this and use my existing email**.



2. Enter your email account information into the fields as follows: (See red letters in graphic below.)
  - A. Your name as you would like it displayed to message recipients.
  - B. Full email address
  - C. Password for the email account.
3. Click **Continue** when finished.



4. Quickly click on **Manual config**.



- Match the same server settings illustrated in the below graphic highlighted by a **red box** with the options shown on your screen.

**Do not change** the values in the fields on your screen that are shown as highlighted in **green** in the below graphic. Your screen will have already prepopulated information from previous setup windows that are required for the email account setup to successfully complete.

Mail Account Setup

Your name:  Your name, as shown to others

Email address:

Password:

Remember password

The following settings were found by probing the given server

	Server hostname	Port	SSL	Authentication
Incoming: POP3	pop.rvusa.com	995	SSL/TLS	Normal password
Outgoing: SMTP	smtp.rvusa.com	465	SSL/TLS	Encrypted password

Username:

Get a new account    Advanced config    Re-test    Done    Cancel

- Click **Done** when finished.

You will be returned to the main Mozilla Thunderbird screen showing your email account. It should also begin downloading any new messages into the Inbox folder.